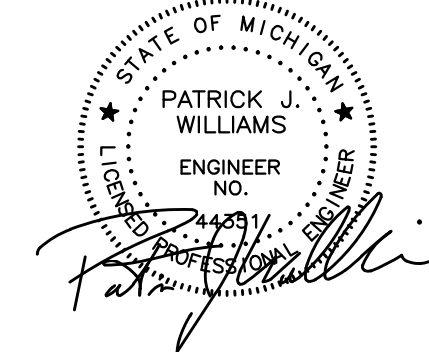




CIVIL ENGINEERS  
LAND SURVEYORS  
LAND PLANNERS

NOWAK & FRAUS ENGINEERS  
46777 WOODWARD AVE.  
PONTIAC, MI 48342-5032  
TEL. (248) 332-7931  
FAX. (248) 332-8257

SEAL



PROJECT  
Village at Bloomfield

CLIENT  
REDICO  
One Towne Square,  
Suite 1600  
Southfield, MI 48076

Contact:  
--  
Phone: (248) 784-6486

PROJECT LOCATION  
Part of the W. 1/2 of Section 5,  
T. 2N., R. 10E., and part of the  
NE 1/4 of Section 6, T. 2N., R.  
10E., Bloomfield Township, The  
City of Pontiac and Bloomfield  
Township (conditionally  
transferred to The City of  
Pontiac) Oakland County,  
Michigan

SHEET  
District 3  
Storm Sewer Profiles



Know what's below  
Call before you dig.

DATE ISSUED / REVISED  
05-12-17 Bids / Permits

DRAWN BY:

A. Wiseman

DESIGNED BY:

A. Wiseman

APPROVED BY:

P. Williams

DATE:

03-16-17

SCALE: 1" = 30'



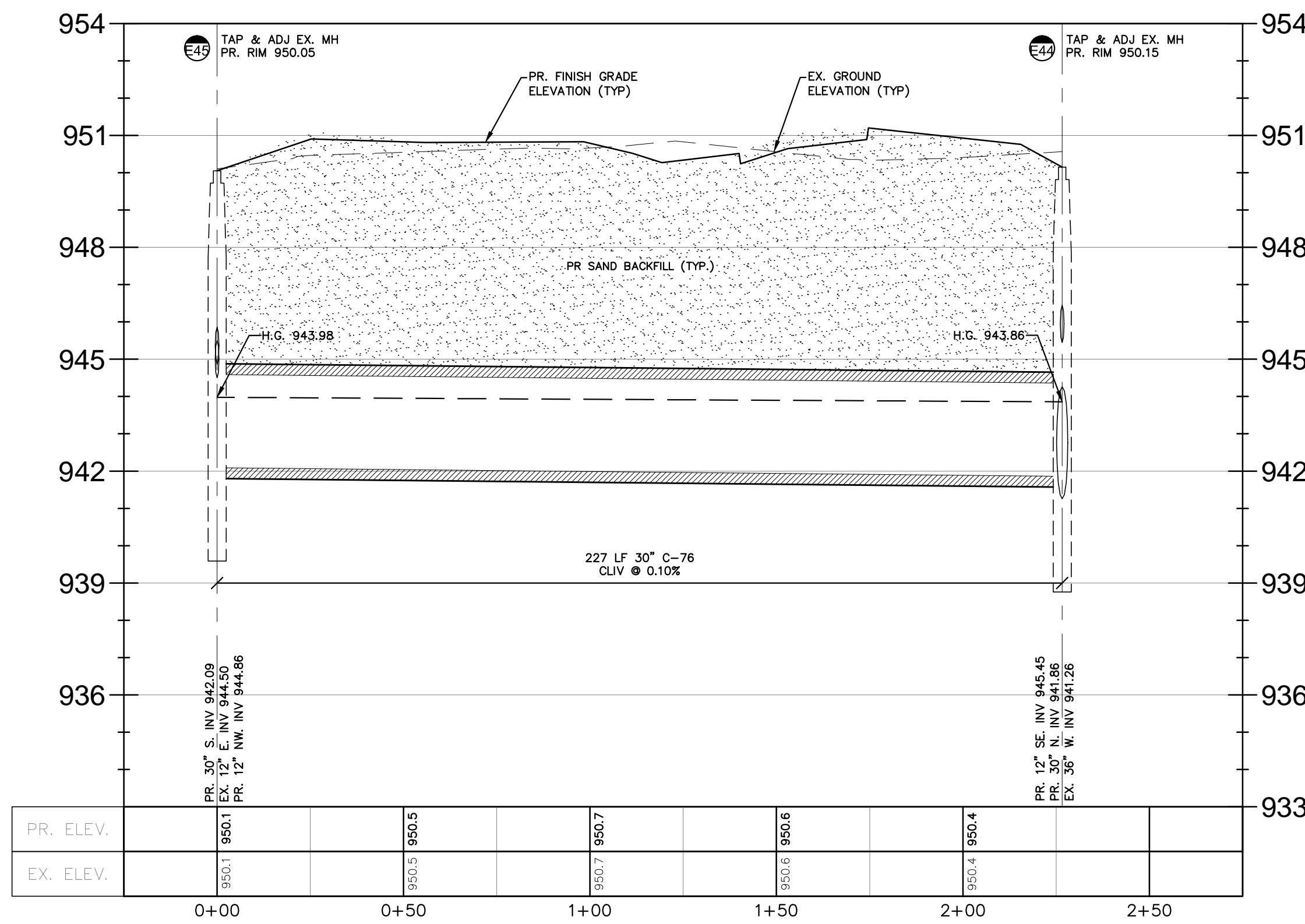
NFE JOB NO.

A116-21

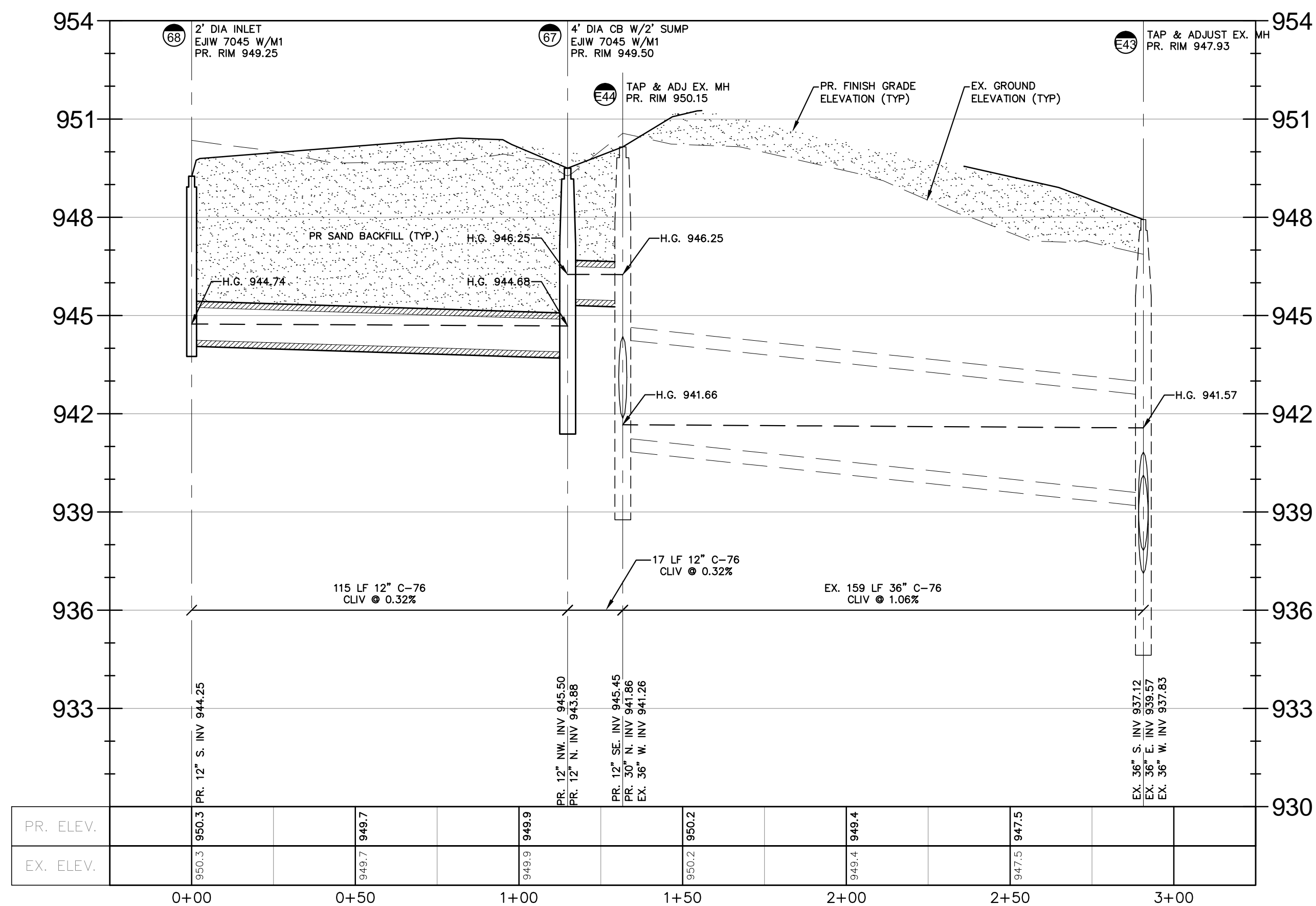
SHEET NO.

C-40

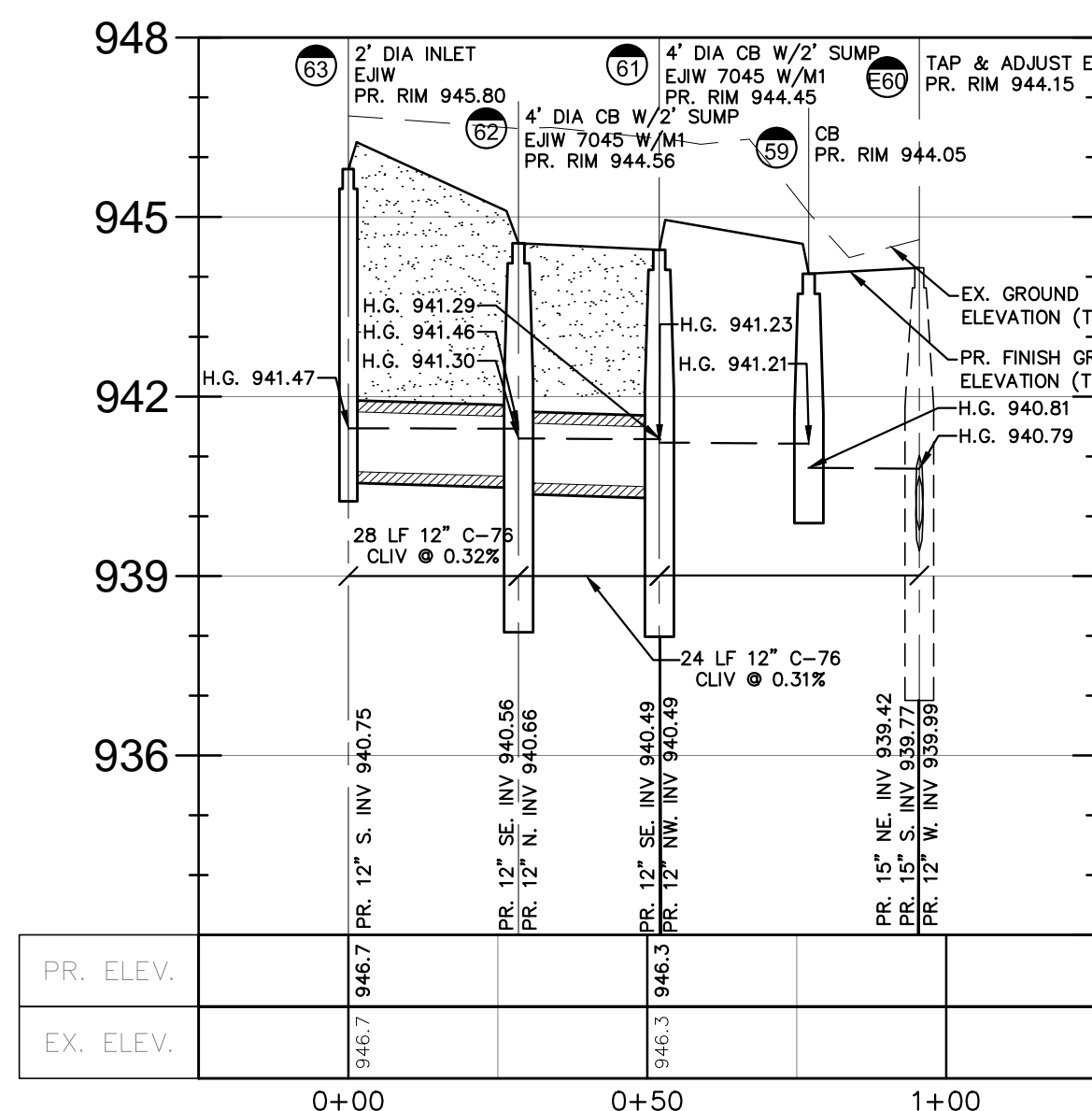
Profile E45-E44



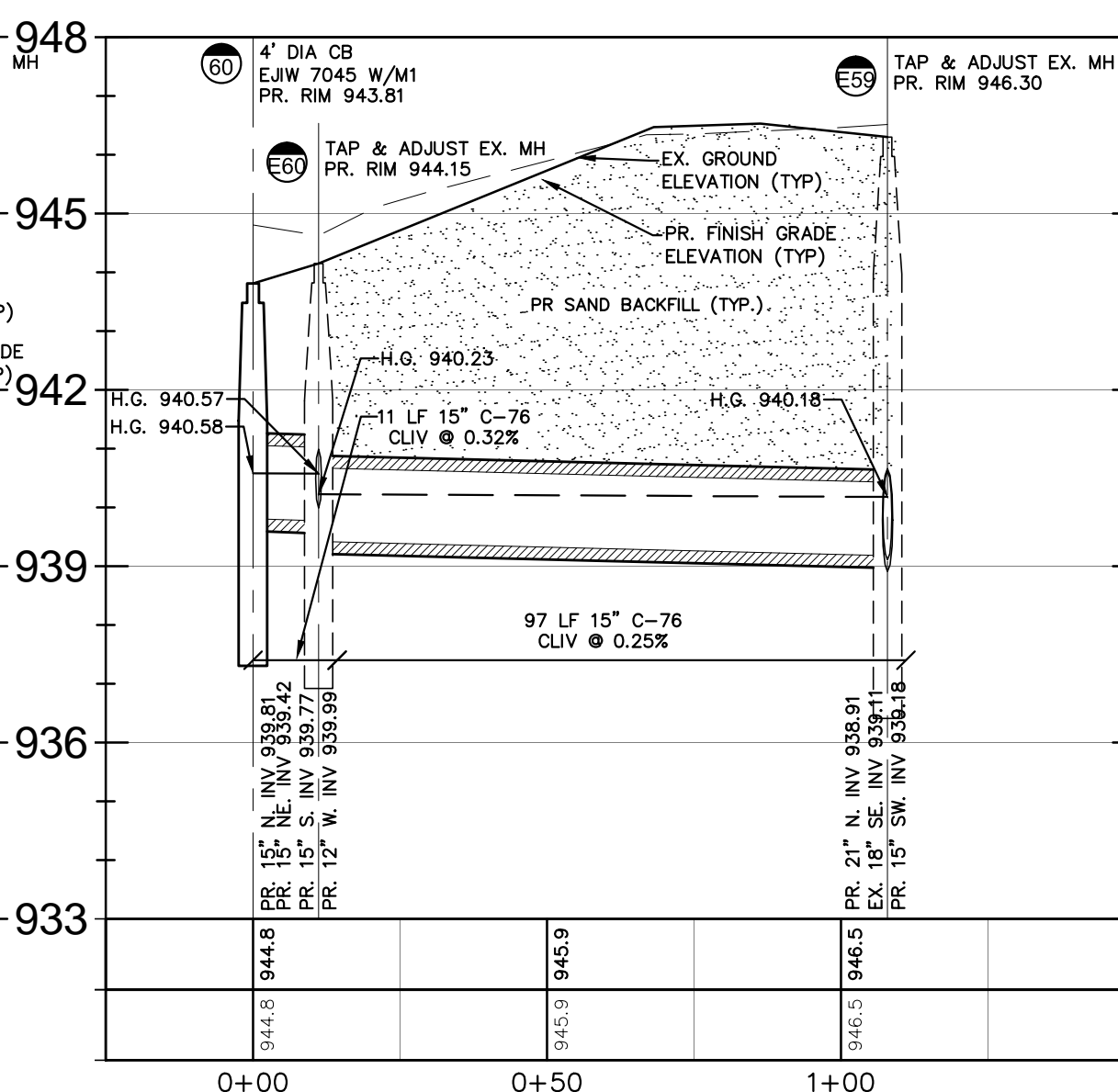
Profile 68-E43



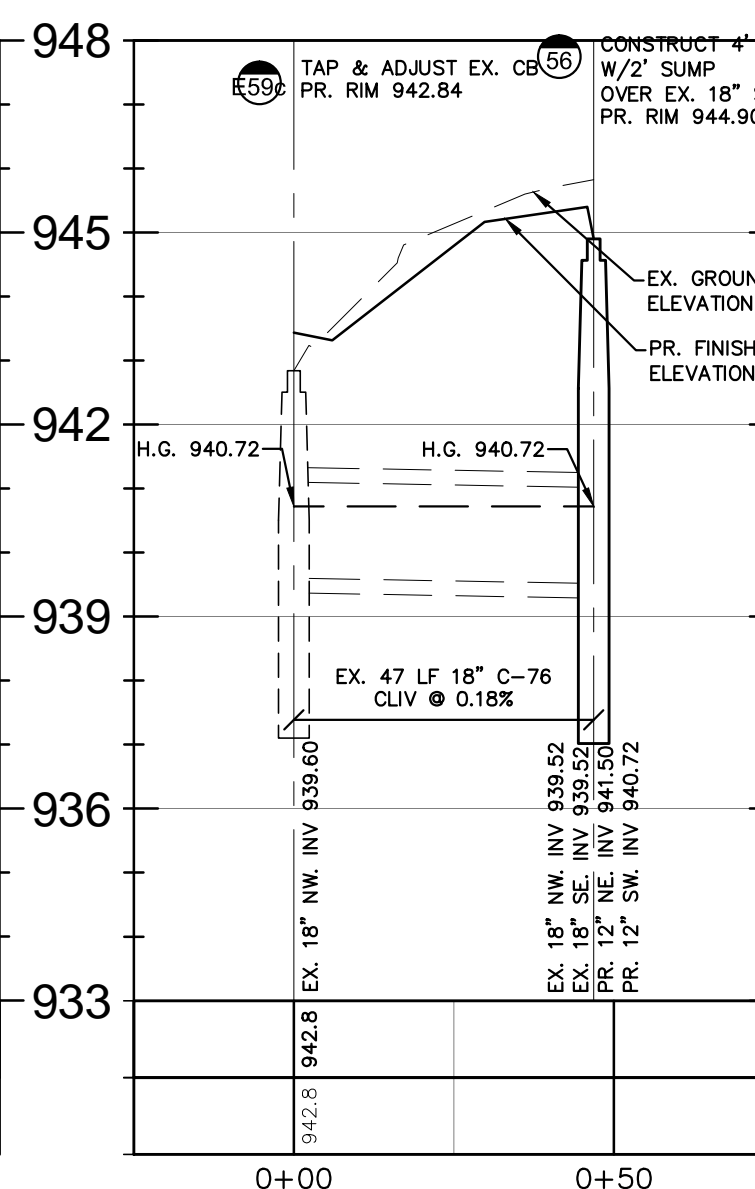
Profile 63-E60



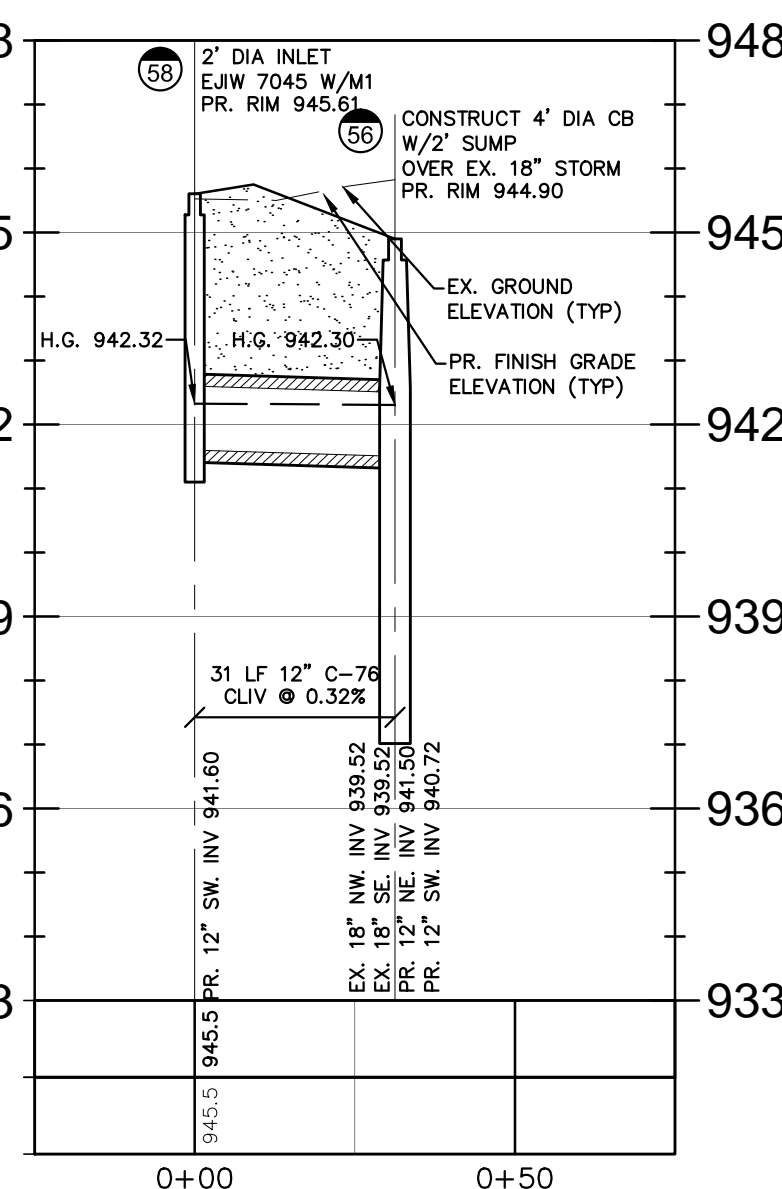
Profile 60-E59



Profile E59C-56



Profile 58-56



Storm Sewer Structure Schedule

Structure Name	Structure Details
#59 CB	PR. RIM 944.05 PR. 12" E. INV. -0.50 PR. 12" NW. INV. -0.50
#61 4' DIA CB W/2' SUMP EJW 7045 W/M1	PR. RIM 944.45 PR. 12" SE. INV. 940.49 PR. 12" NW. INV. 940.49
#62 4' DIA CB W/2' SUMP EJW 7045 W/M1	PR. RIM 944.56 PR. 12" SE. INV. 940.56 PR. 12" N. INV. 940.66
#63 2' DIA INLET EJW	PR. RIM 945.80 PR. 12" S. INV. 940.75
#E60 TAP & ADJUST EX. MH	PR. RIM 944.15 PR. 15" NE. INV. 939.42 PR. 15" S. INV. 939.77 PR. 12" W. INV. 939.99

Storm Sewer Structure Schedule

Structure Name	Structure Details
#56 CONSTRUCT 4' DIA CB W/2' SUMP OVER EX. 18" STORM	PR. RIM 944.90 EX. 18" NW. INV. 939.52 EX. 18" SE. INV. 939.52 PR. 12" NE. INV. 941.50 PR. 12" SW. INV. 940.72
#E59c TAP & ADJUST EX. CB	PR. RIM 942.84 EX. 18" NW. INV. 939.60

Storm Sewer Structure Schedule

Structure Name	Structure Details
#60 4' DIA CB EJW 7045 W/M1	PR. RIM 943.81 PR. 15" N. INV. 939.81
#E59 TAP & ADJUST EX. MH	PR. RIM 946.30 PR. 21" N. INV. 938.91 EX. 18" SE. INV. 939.11 PR. 15" SW. INV. 939.18
#E60 TAP & ADJUST EX. MH	PR. RIM 944.15 PR. 15" NE. INV. 939.42 PR. 15" S. INV. 939.77 PR. 12" W. INV. 939.99

Storm Sewer Structure Schedule

Structure Name	Structure Details
#56 CONSTRUCT 4' DIA CB W/2' SUMP OVER EX. 18" STORM	PR. RIM 944.90 EX. 18" NW. INV. 939.52 EX. 18" SE. INV. 939.52 PR. 12" NE. INV. 941.50 PR. 12" SW. INV. 940.72
#58 2' DIA INLET EJW 7045 W/M1	PR. RIM 945.61 PR. 12" SW. INV. 941.60